

# Technical Information



KONICA MINOLTA

**To: KONICA MINOLTA AUTHORISED TECHNICAL PERSONNEL**

**From: KONICA MINOLTA BUSINESS SOLUTIONS (UK) LTD  
TECHNICAL SUPPORT GROUP**

**Date: 30 April 2008**

**Topic: bizhub C203\C253\C353\C451\C550\C650  
Import\Export of data using PSWC**

When performing various actions on a bizhub device such as a FW upgrade or an HDD format or a Data clear there is the possibility of machine\user data being lost.

If there are a lot of one touch buttons or user boxes this can take a long time to set back up and account track\user authentication data can be lost.

Therefore it is strongly advised to back up the data of the machine before you perform a task or the machine is backed up after the initial setup and the backup files are stored at the customer site.

The back up can be easily achieved using PSWC import\export.

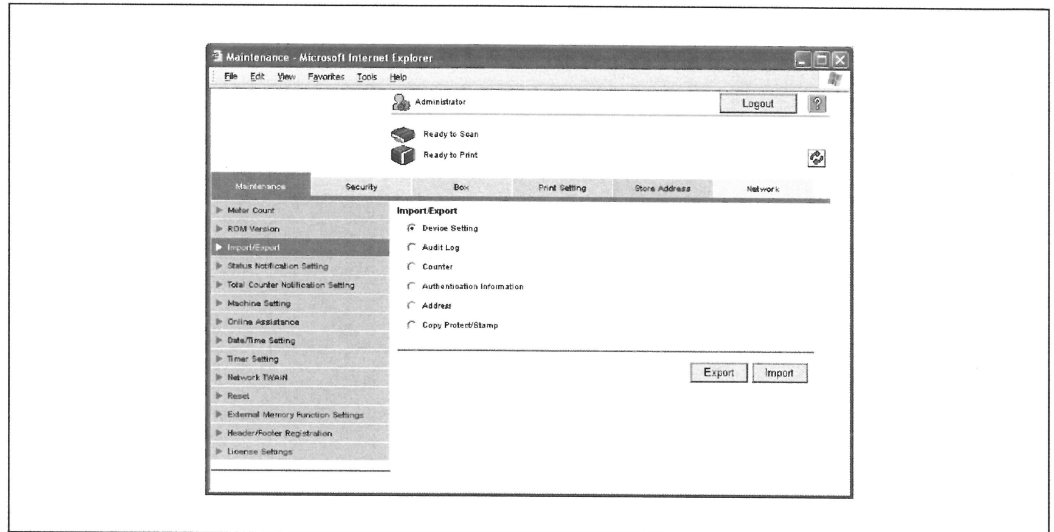
First log into PSWC Administrator Mode and under the maintenance tab you will find the import\export option.

Then please use the instructions taken from the user manual on page 2 of this document.

## Import/Export

Machine settings can be saved as a file (exported), or settings can be written to the machine (imported).

- 1 Select the information to be imported/exported.
- 2 Click the [Import] button or [Export] button.



Item	Description
Device Setting	Imports or exports device settings.
Audit Log	Exports the audit log information.
Counter	Exports the counter information.
Authentication Information	Backs up and restores the entire authentication data. Also, user registration information and authentication data can be imported or exported. When using an optional authentication unit on this machine, authentication data can be imported or exported. When exporting authentication information, a password can be specified if necessary. The specified password is required when importing the authentication information. If authentication is performed with PageScope Authentication Manager, this menu item does not appear.
Address	Backs up and restores the entire address data. Also, information on each address can be imported or exported. When exporting address information, a password can be specified if necessary. The specified password is required when importing the address information.
Copy Protect/Stamp	Copy protect /stamp data can be imported or exported.



### Reminder

*The data in the exported files cannot be edited.*

*When e-mail destinations with certificates are exported and imported, the certificate information must be registered again after importing.*

*Only exporting is possible when "Audit Log" or "Counter" is selected.*

*Import or export authentication data in the same way as with user registration information. Perform the operation with the user authentication information before performing it with the authentication data.*

*"Audit Log" is available when audit log setting is enabled on this machine.*