

Banner printing



Great performance.
From your printer, too!

Contents

- General Information
- Setup Banner
- Setup Counter
- Machine Setting
- Printer Setting
- Banner Usage
- Photo Software
- Banner Media





KONICA MINOLTA

Konica Minolta – Banner Printing

General Information

Banner paper size

min. 148 x 458 mm

max. 297 x 1200 mm

Banner paper weight

min. 127g/m²

max 160 g/m² (C250/C250P/C300/C352/C352P)

max. 209g/m² (C351/C450/C450P)

All paper sizes larger than A3+ (457mm) are counted as banner paper size



Konica Minolta – Banner Printing

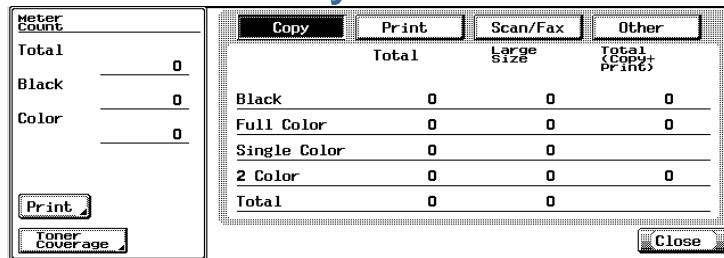


KONICA MINOLTA

Setup Banner

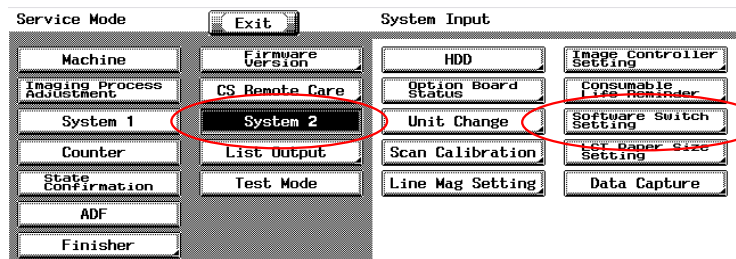
Enter Service Mode

Select “Utility” – “Details”



Press “Stop”-”0”-”0”-”Stop”-”0”-”1”

Enter “System 2” - “Software Switch Setting”

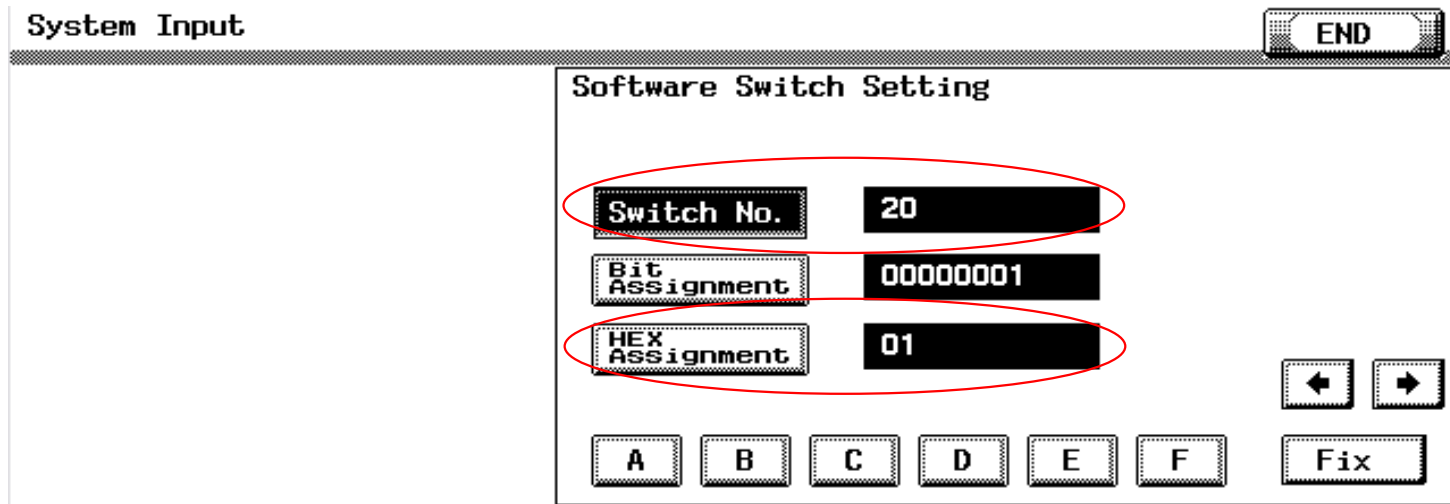


Konica Minolta – Banner Printing



Setup Banner

- Select “Switch No.” and enter “20”
- Select “HEX Assignment” – use arrow to select second digit
- Enter “1”
- Press “Fix”



Leave the Service Mode
Switch machine Off/On

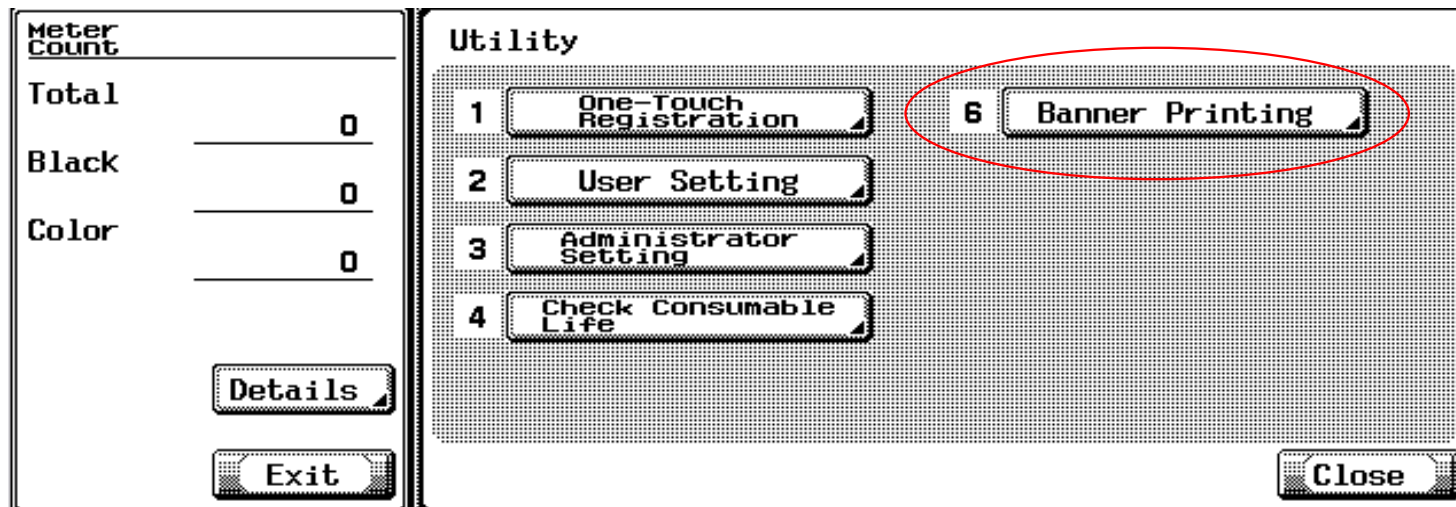




Konica Minolta – Banner Printing

Setup Banner

To start banner printing
Select “Utility” – “Banner Printing”





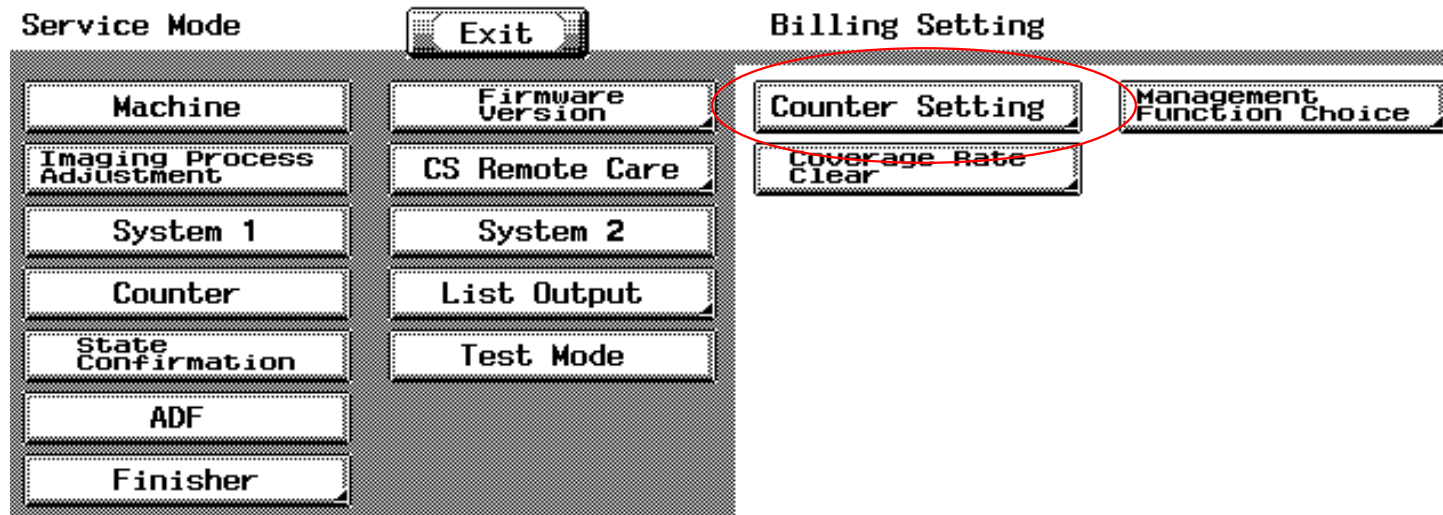
Konica Minolta – Banner Printing

Setup Counter

Enter “Service Mode”

In the “Service Mode” base screen press “Stop”-”9”

Select “Counter Setting”



Setup Counter

2x 4 Modes are available for banner counting

Billing Setting END

Counter Setting

Total Counter Mode

Mode1

Mode2

Large Size Counter Mode

**A3
11 × 17**

No Count

A3/B4/
11x17/
8½x14

A3/11x17
B4/8½x14
Foolscap

Long Length Paper Counter Mode

Mode1

Mode2

Mode3

Mode4





Konica Minolta – Banner Printing

Setup Counter

Mode/ Large Size	Large Size “No Count”	Large Size “Count”
Mode 1	1 click	2 clicks
Mode 2	2 clicks	3 clicks
Mode 3	457.3 – 915 mm = 2 clicks 915.1 – 1200 mm = 3 clicks	457.3 – 915 mm = 3 clicks 915.1 – 1200 mm = 4 clicks
Mode 4	457.3 – 686 mm = 2 clicks 686.1 – 915 mm = 3 clicks 915.1 – 1200 mm = 4 clicks	457.3 – 686 mm = 3 clicks 686.1 – 915 mm = 4 clicks 915.1 – 1200 mm = 5 clicks





KONICA MINOLTA

Konica Minolta – Banner Printing

Machine setting

Switch on Banner Printing

- NOTICE Paper Settings have not to be done on the machine side, only in printer driver
- Slide away or detach finisher (not for FS-514)

09/29/05
13:56

No.	User Name	Status
-----	-----------	--------

De-lete

↑ ↓

Printing Banner paper.
To successfully execute Banner printing, shift finisher left and place blank Banner sheet over transport section.





KONICA MINOLTA

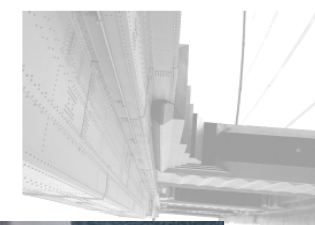
Konica Minolta – Banner Printing

Machine setting

Send print job.

When the print job is completely processed, insert the banner paper in the Manual Bypass.

If the paper is recognised correctly, a “Complete” button will appear. Press the button and the print will start.

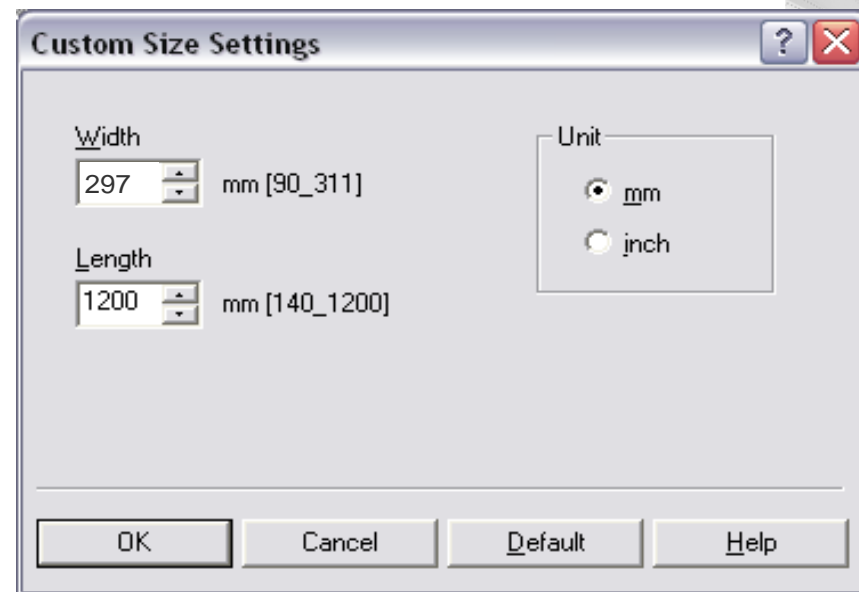
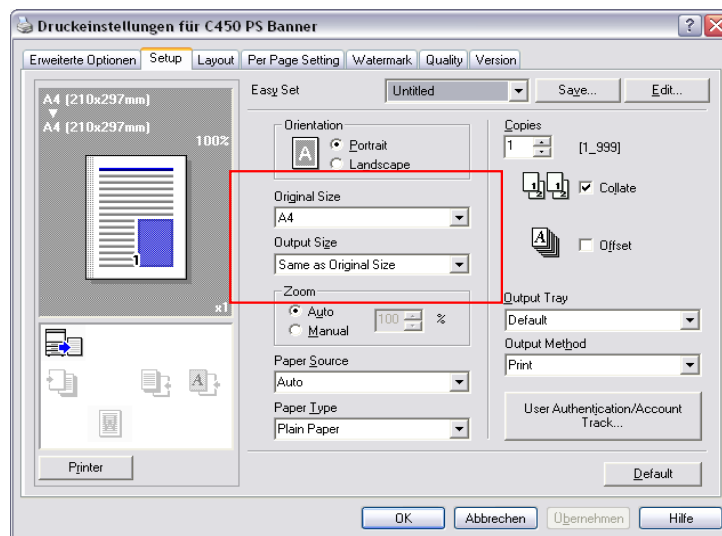


Printer Setting

1. Setup paper size in application

Notice : WinWord does only support 550mm maximum.
PowerPoint and Excel support full size up to 1200 mm.

2. Setup custom paper size for in and output tray.





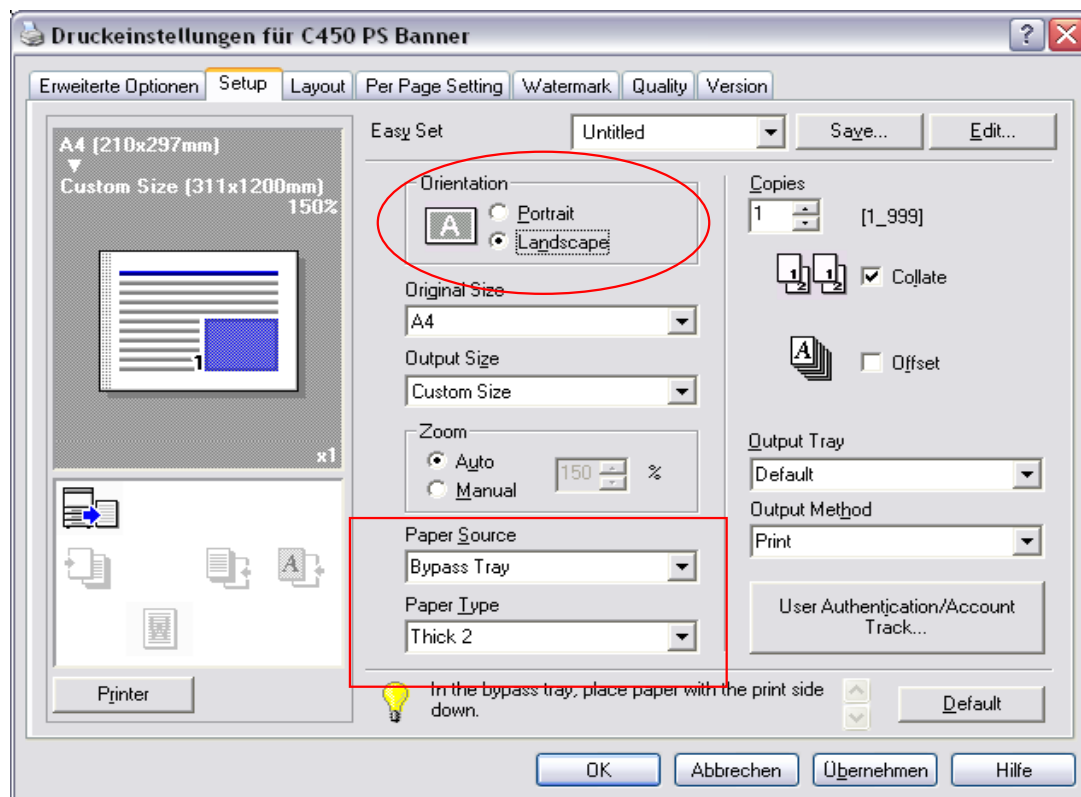
Konica Minolta – Banner Printing

Printer Setting

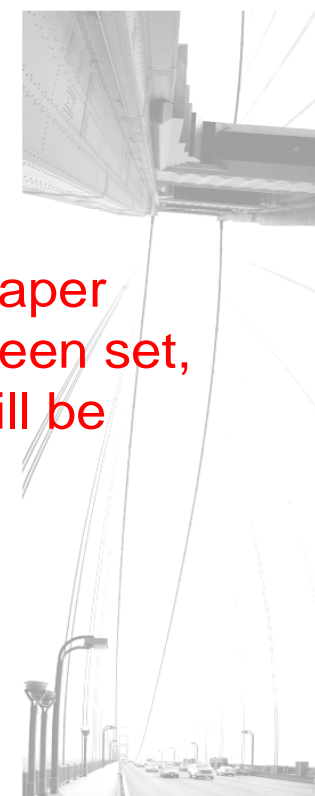
3. Select Manual Bypass and corresponding paper type

Thick 1 – 127 – 150 g/m²

Thick 2 – 151 – 209 g/m²



Notice. As well the paper orientation have to been set, as no autorotation will be applied.



Konica Minolta – Banner Printing



Banner Usage

Interesting applications are:

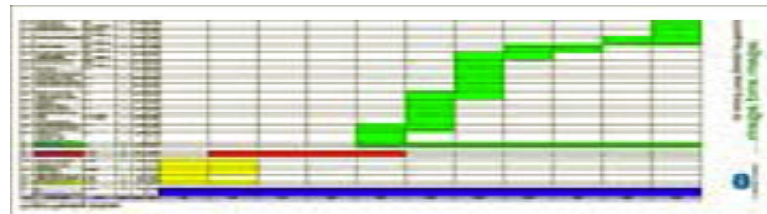
Advertisement Slogans



Photo Print



Project Plans





KONICA MINOLTA

Konica Minolta – Banner Printing

Photo Software

Photo software to create automatic panorama pictures

- Ulead Cool 360
- Pixtra PanoStitcher
- ACDSEE Stitcher Plug-In
- Panorama Factory





KONICA MINOLTA

Konica Minolta – Banner Printing

Photo Software – Ulead Cool 360

Completely wizard driven – Ease of use
Not many settings possible
Fast processing
Bad to very bad quality



Price: 40\$

<http://www.ulead.com/cool360/runme.htm>



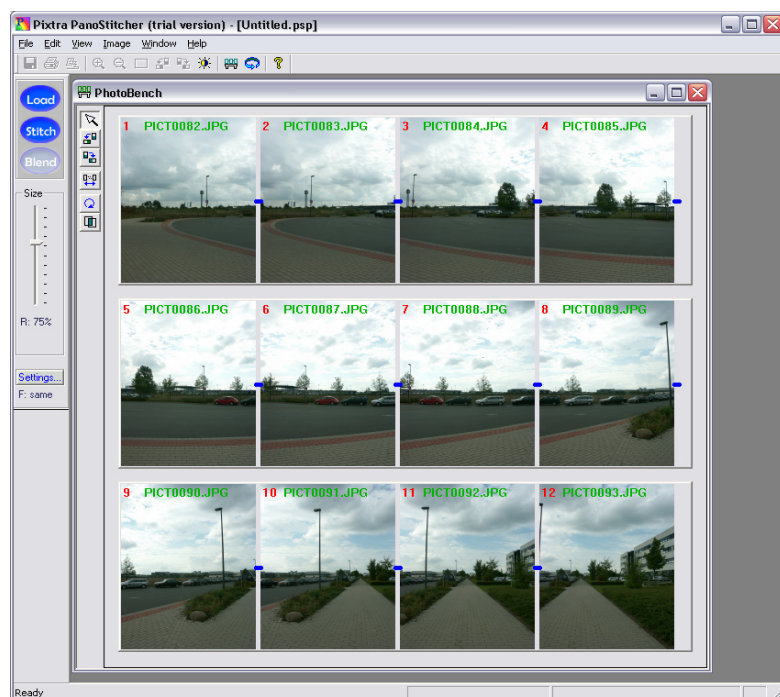


KONICA MINOLTA

Konica Minolta – Banner Printing

Photo Software – Pixtra PanoStitcher

- No wizard, complete manual process
- Some settings possible
- Normal processing
- Mid to good quality



Price: 30\$

http://www.pixtra.com/products/PanoStitcher/PanoStitcher_designs.htm





KONICA MINOLTA

Konica Minolta – Banner Printing

Photo Software – ACDSEE Plug-In

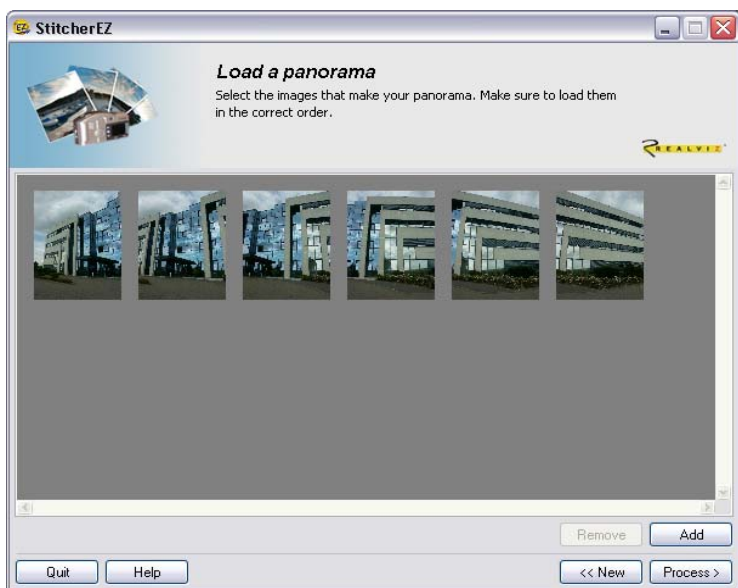
Completely wizard driven – Ease of use

Not many settings possible

Mid processing

Good to very good quality

*ACDSEE itself is a very interesting graphical program



Price: 50\$ + 30\$

<http://www.acdsystems.com/products/plugins/stitcherez/index>

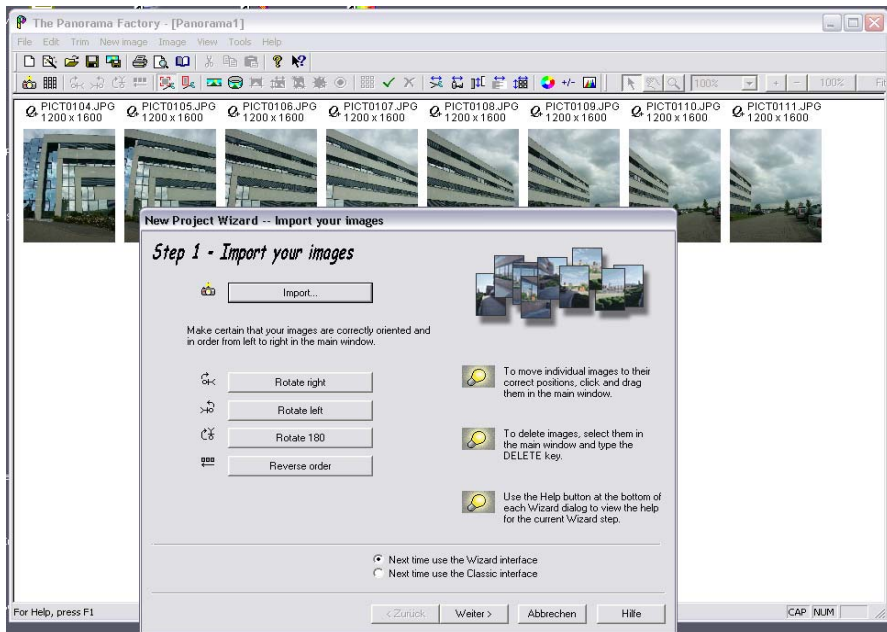


Konica Minolta – Banner Printing



Photo Software – Panorama Factory *Recommended*

- Completely wizard driven and complete manual workflow
- Many settings and enhancements possible
- Mid to slow processing
- Very high quality



Price: 60\$

<http://www.panoramafactory.com/>



Banner media

297 x 1200 mm @ 160g/m²

250 sheets

Article No. 9967000189

297 x 1200 mm @ 160g/m²

100 sheets

Article No. 9967000224

311 x 900 mm @ 160, 200 and 250g/m² is available from
Schneider & Söhne

(<http://www.schneidersoehne.com/ssp/englisch/index.html>)

Media – Color Copy





KONICA MINOLTA

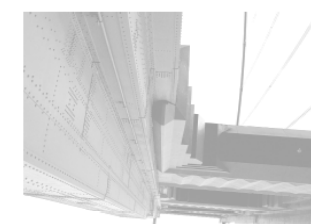
Konica Minolta – Banner Printing

Banner Tray

Special multibypass extension for banner printing.

Compatible: bizhub C250/C250P/C300/C352/C352P/
C351/C450/C450P

Article No. 9967000261



Magnetic Paper Guidance



Bypass Adjustment



Adjustable Stabiliser Foot

